

# 鳥井家公私之日記

## (文久4年7月)

〔ホームページ掲載元〕

豊岡市立図書館「郷土資料デジタルライブラリ」

<http://lib.city.toyooka.lg.jp/kyoudo/komonjo/>

〔二次利用にあたって〕

この史料は所有権が豊岡市以外の第三者にあります。

二次利用(掲載・展示等)される場合は**申請書の提出**が必要です。

〔問合せ先〕

豊岡市 文化振興課 文化財室

〒669-5305 兵庫県豊岡市日高町祢布 808

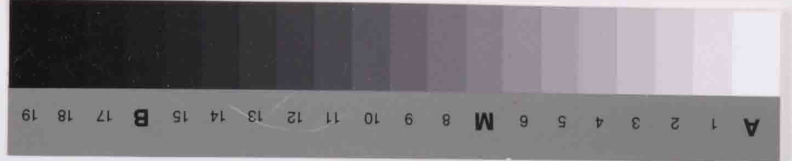
電 話 番 号：0796-21-9012

ファクス番号：0796-42-6112

メールアドレス：bunkazai@city.toyooka.lg.jp

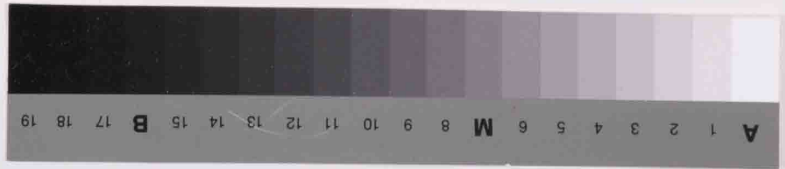
※図書館とは別の部署ですのでご注意ください。

Handwritten Japanese text in cursive (sōsho) style, spanning two pages of an old manuscript. The text is arranged in vertical columns, with a large character '月' (Moon) written prominently on the right page. The paper shows signs of age, including foxing and some damage at the top corners.





Handwritten Japanese text in cursive style (sōsho) on two pages of an old book. The text is densely packed and covers most of the pages. The right page has a large character '下' (shimo) at the top right. The left page has a large character '上' (ue) at the top left. The ink is dark and the paper is aged and yellowed.

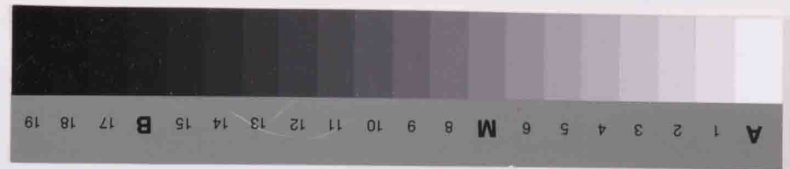








Handwritten Japanese text in cursive style (sōsho) on two pages of an old book. The text is densely packed and covers most of the page area. The right page contains approximately 15 vertical columns of text, while the left page contains approximately 12 vertical columns. The ink is dark, and the paper shows signs of age and wear.



一、金部... 何自... 之... 也...

一、金部... 何自... 之... 也...

一、佛... 何自... 之... 也...

一、佛... 何自... 之... 也...

一、佛... 何自... 之... 也...

一、佛... 何自... 之... 也...

一、佛... 何自... 之... 也...

一、佛... 何自... 之... 也...

一、佛... 何自... 之... 也...

一、佛... 何自... 之... 也...

一、佛... 何自... 之... 也...

一、佛... 何自... 之... 也...

一、佛... 何自... 之... 也...

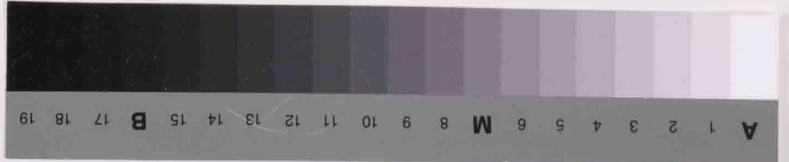
一、佛... 何自... 之... 也...

一、佛... 何自... 之... 也...

一、佛... 何自... 之... 也...

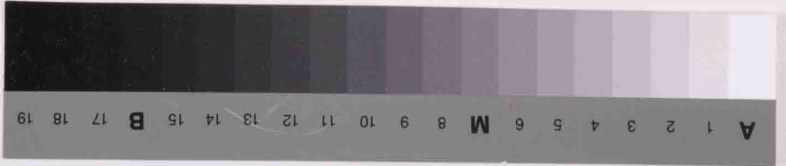
一、佛... 何自... 之... 也...

一、佛... 何自... 之... 也...





Handwritten Japanese text in cursive style (sōsho) on two pages of an old book. The text is arranged in vertical columns, reading from right to left. The right page contains approximately 10 columns of text, while the left page contains approximately 8 columns. The ink is dark and the paper shows signs of age and wear.



和名者常備  
初年三月四年

初年三月四年

右取片...

右取片... 渡

布...

布...

山...

安達院...

小倉...

作...

田...

